

The Drive Back Out

- Sometimes the “Fishermen” will drive unwanted dolphins back out to sea using the same deafening method used to drive them in.
- These are mostly young babies and juveniles that aren't big enough for the quota.
- These dolphins being young, traumatized, injured and torn away from their families' chances of survival are slim.



Dolphins being driven back to sea

Ways to Help

- Follow Sea Shepherd Cove Guardians and Dolphin Project on Facebook.
- Join “The Taiji Action Group” on Facebook
- Join “Act Now for Dolphins: Unite Against the Taiji Slaughter” on Facebook
- Take the pledge to never pay to see captive dolphins again.
- Write letters to Japanese Officials
- Write letters to WAZA and IMATA

Pictures from Sea Shepherd. Information from Dolphin Project. Logo from Earth Island Institute

<http://www.seashepherd.org/cove-guardians/>

The Taiji, Japan-Dolphin Slaughter

A step by step account of the annual inhumane drive, capture and slaughter of 1,000's of dolphins.



Hunting Season in Taiji

Hunting season starts September of every Year and Ends March of the following year.

- 13 Boats hunt daily (weather permitting) with about 26 "Fishermen".
- The "fishermen" Union has a yearly kill quota for seven species of dolphin that is outdated.
- 2013/2014 Quota is 2,013 dolphins from 7 different species



Banger Boats

Species include:

- Striped dolphins
- Bottlenose dolphins
- Pantropical spotted dolphins
- Risso's dolphins
- Pilot whales
- Pseudo orcas (False Killer Whales)
- Pacific White-sided dolphins



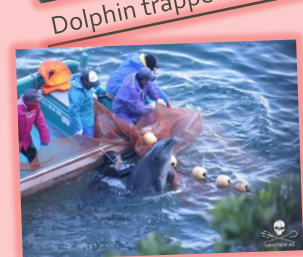
Dolphins in Cove

The Dolphin Drive

- Once the "Fishermen" have spotted a pod of dolphins that are migrating past Taiji, they corral them with a wall of noise by banging poles continually against the sides of the boats.
- The noise creates a wall of sound underwater, and the dolphins suddenly find themselves trapped between this wall of sound and the shoreline.
- Trying to get away from the sound, the dolphins swim in the opposite direction, toward the shore. The dolphins' panic and loss of navigational sense enable the "fishermen" to drive them into a small, hidden Cove near Taiji harbor.
- The "fishermen" seal the mouth of the Cove with several nets, and the dolphins are trapped.
- Sometimes the pod is left overnight without food or water (which comes from fish) in very shallow water and nowhere to move.

The Captive Process

- This process drags on for several hours, and some dolphins die from either shock, injuries or exhaustion during this time.
- Some dolphins make frantic attempts at staying at the surface of the water, but their pectoral fins have been dislocated or broken by the "fishermen" manhandling them.
- Boat motors are documented to run over dolphins, causing bloody injuries.
- Often times, the dolphins are so exhausted at this point, they can't even stay afloat. Some have large amounts of blood coming out of their blowholes.



Injured Dolphin



Injured Dolphin



Dolphins run over

The Slaughter Process

- WAZA/JAZA trainers are alongside the "fishermen" during this process and have been documented in the same boat, laughing and joking around after a large pod of dolphins had just been killed.
- Dolphin Trainers and "fishermen" haul the dolphins to the killing cove, with the dolphins' blowholes underwater essentially suffocating them.



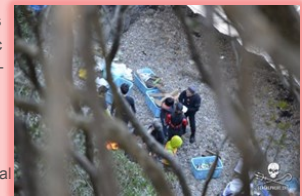
- It's been documented that members of the international aquarium and zoo industry (WAZA/JAZA) get in the water with the dolphin killers, tying ropes around the dolphins' tail flukes so that the "fishermen" could tie the dolphins to their boats.

Tools used to kill



- After Trainers and "fishermen" have tormented the dolphins for hours, some are in shock. Others are seriously injured by boat propellers.

- The "fishermen" pull dolphins underneath an array of plastic tarps (set up to prevent visibility).
- Under the tarps, the "fishermen" push a sharp metal spike into the dolphins' necks just behind the blowholes, which is supposed to sever the spinal cord and produce an instant "humane" death but it doesn't.



Trainers and Killers

- The "fishermen" then push wooden corks into the wounds to



Hiding their deeds



Dolphins still alive



Bloody Cove